

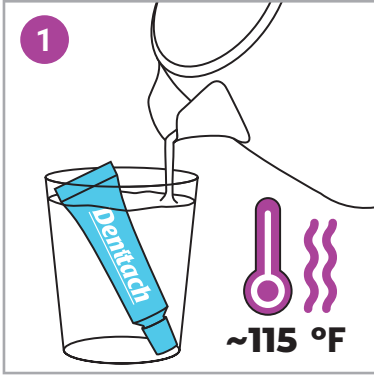
## Important Notice: Please Read Before Using Denttach

Before using Denttach, ensure your dentures are thoroughly cleaned with a denture cleaner. When cleaning your dentures, especially with a cleaner containing sodium perborate, make certain there is no residue left on your dentures. Any cleaner residue may mix with Denttach, potentially causing a negative reaction that could lead to soreness and burning of the gums.

The best practice is to apply Denttach directly from the tube without any heating. If you find it difficult to squeeze the product out, place the tube in warm water heated to 115°F for 3 minutes. Follow the full instructions below carefully.

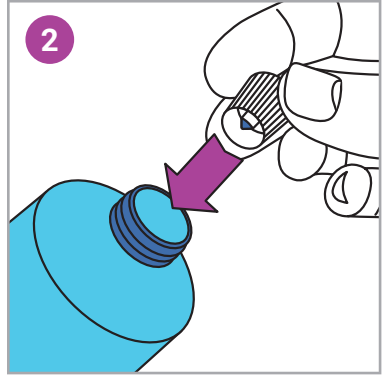
**WARNING:** Do not overheat the product. Excessive heat can cause the alcohols in Denttach to rise to the surface, which can result in temporary burning and blistering of the gums.

A slight burning sensation is normal for the first 5 minutes. If the burning does not become a tingle after this time, remove the dentures and rinse them with cold water before reinserting. If the burning persists, remove the dentures immediately and discontinue the use of Denttach.

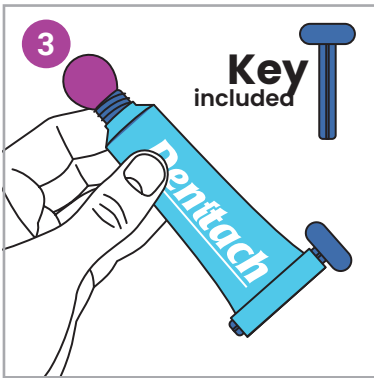


**Follow this step only if you have difficulty squeezing the product out of the tube.**

Place the tube in warm water up to 115°F for 3 minutes. Ensure the tube is completely submerged in the water so that all the contents are warmed evenly. While the tube is warming, thoroughly clean and dry the dentures. The dentures must be completely dry and clean for the thermoplastic adhesive to stick properly.

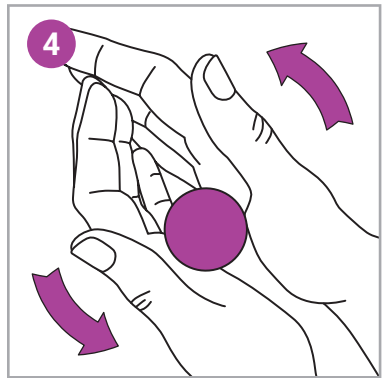


After warming the tube remove the cap and pierce the opening with the tip inside the lid, to create a large round hole. Twist the tip until the hole is completely opened.

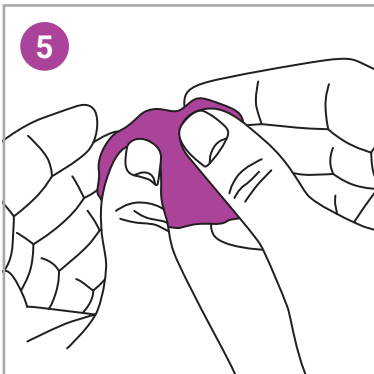


Place the tube inside the provided key and slowly turn the key until a cherry-sized portion of Denttach is squeezed out.

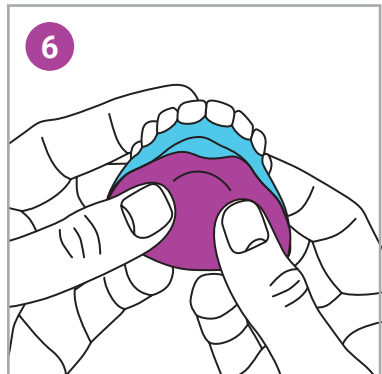
**WARNING:** If the product comes out of the tube too quickly and is difficult to roll into a ball, it indicates that the product was heated for too long and the alcohols have risen to the top. **DO NOT USE THAT PORTION OF DENTTACH.** Using it can cause burning and blistering of the gums.



Replace cap to avoid the hardening of the Denttach. Using dry hands, roll the ball between the palm of your hands.



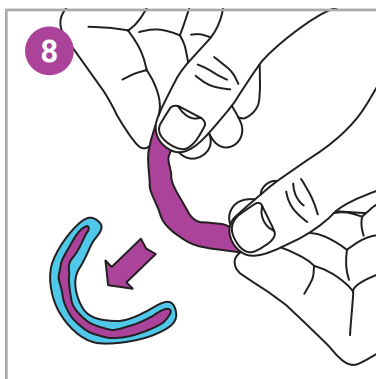
Stretch the ball of product between your fingers to give it the elasticity needed to cover your dentures properly.



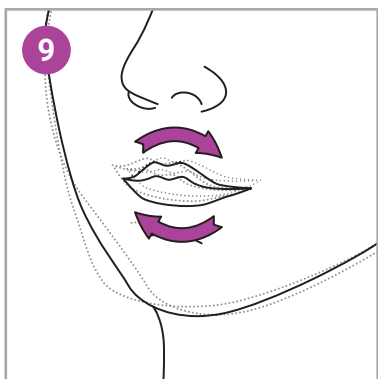
Apply the Denttach to the top dentures and smooth it out to evenly cover the entire surface. Don't worry if it extends slightly over the edges; trimming will be done later.



Use your thumbs to spread the product over the surface. If more is needed to completely cover the area, repeat steps 3-5.

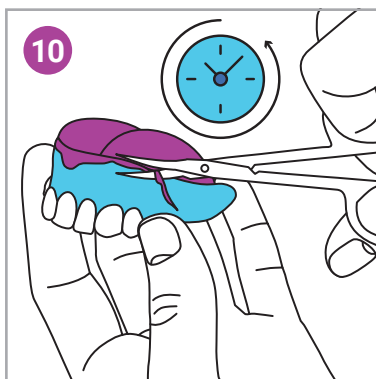


Repeating steps 3-5 apply Denttach on the lower dentures taking care to press the Denttach alongside the borders of the lower dentures to ensure the suction effect.

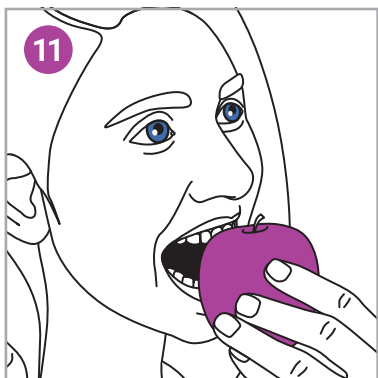


Rinse your mouth with water and immediately place the dentures in your mouth. Clench down and make significant lip movements to ensure the dentures are properly positioned. Keep the dentures in your mouth for a few hours before removing them for the first time.

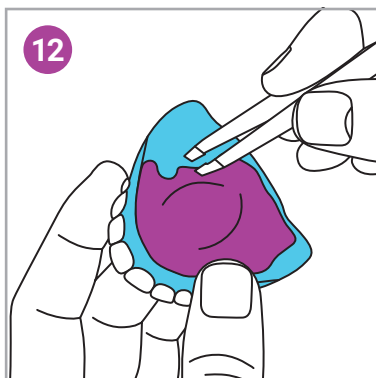
**Note:** If you still feel a burning sensation after 5 minutes, remove the dentures, rinse them with cold water, and then replace them in your mouth.



Once the Denttach has turned a lighter pink (this can be anywhere from 2 hours to 24 hours depending on the amount of heat initially used) rinse the dentures off with cold water and then using a small scissor, trim the excess that has gone over the edge. If there is no excess to trim, too little material was used.



After 2 hours, the Denttach will be sufficiently cured for eating and drinking. However, avoid hot beverages, alcohol, and biting into hard foods, such as apples, for 24 hours, as the Denttach will reach full cure only after 24 hours.



After 7 days, remove the Denttach from your dentures. Soften the product by placing your dentures in hot water for 5 minutes. Locate a raised corner of the product and gently pull to remove it. If needed, use tweezers to assist with the removal.

**Note:** Do not attempt to remove the product from your dentures before it is fully cured, as it may not come off properly.

**Note:** It is essential to remove the product after 7 days to maintain proper hygiene and prevent bacterial or fungal complications.

**INGREDIENTS:**

Poly Vinyl Acetate, Ethanol, Water, Propanone, Isopropyl, Eucalyptol, Menthol (natural), Pigment Red